



LED STREET LIGHT 100W

APPLICATION/DESCRIPTION

* NEW DESIGN OR REPLACE OLD LAMP TO SAVING ENERGY AND LONG DURATION TIMES



SPECIFICATION

- MATERIAL : Aluminum + lens
- INPUT VOLTAGE : 85-305 VAC
- LED CHIP : SMD
- POWER : 100W
- LUMINOUS FLUX : 16000 lm
- EFFICACY : 160 lm/W
- COLOR RENDERING INDEX : >70
- LED COLOR TEMPERATURE : 2700K-6500K
- THDi : <15%
- POWER FACTOR : >0.9
- WORKING TEMPERATURE : -10°C - 50°C
- LIGHTING SOURCE LIFE : >50,000Hrs.

STANDARD

TIS. 1955-2551 LIGHTING AND SIMILAR EQUIPMENT:
 RADIO DISTURBANCE LIMITS
 ISO 9001 CERTIFIED FOR QUALITY CONTROL GUARANTEE
 RoHS

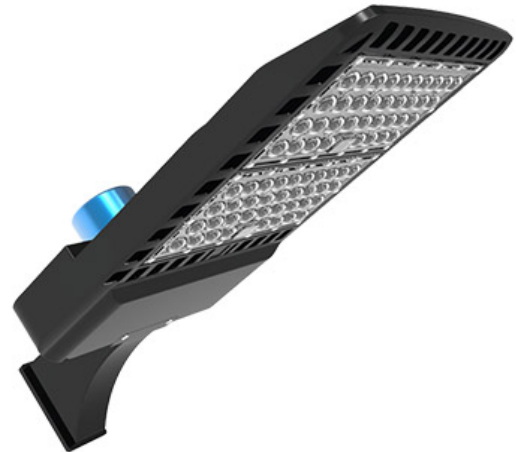
MODEL	LAMP		HOLE CUT(mm)			WEIGH	REMARK
	WATT	TYPE	W	L	H	Kg	
XZ-LD-022FS	100	SMD	310	495	84	11.5	



LED STREET LIGHT 200W

APPLICATION/DESCRIPTION

* NEW DESIGN OR REPLACE OLD LAMP TO SAVING ENERGY AND LONG DURATION TIMES



SPECIFICATION

MATERIAL	: Aluminum + lens
INPUT VOLTAGE	: 85-305 VAC
LED CHIP	: SMD
POWER	: 200W
LUMINOUS FLUX	: 32000 lm
EFFICACY	: 160 lm/W
COLOR RENDERING INDEX	: >70
LED COLOR TEMPERATURE	: 2700K-6500K
THDi	: <15%
POWER FACTOR	: >0.9
WORKING TEMPERATURE	: -10°C - 50°C
LIGHTING SOURCE LIFE	: >50,000 Hrs.

STANDARD

TIS. 1955-2551 LIGHTING AND SIMILAR EQUIPMENT:
 RADIO DISTURBANCE LIMITS
 ISO 9001 CERTIFIED FOR QUALITY CONTROL GUARANTEE
 RoHS

MODEL	LAMP		HOLE CUT(mm)			WEIGH	REMARK
	WATT	TYPE	W	L	H	Kg	
XZ-LD-022FS	200	SMD	310	621	84	13.5	



LED STREET LIGHT 300W

APPLICATION/DESCRIPTION

- * NEW DESIGN OR REPLACE OLD LAMP TO SAVING ENERGY AND LONG DURATION TIMES



SPECIFICATION

MATERIAL	: Aluminum + lens
INPUT VOLTAGE	: 85-305 VAC
LED CHIP	: SMD
POWER	: 300W
LUMINOUS FLUX	: 48000 lm
EFFICACY	: 160 lm/W
COLOR RENDERING INDEX	: >70
LED COLOR TEMPERATURE	: 2700K-6500K
THDi	: <15%
POWER FACTOR	: >0.9
WORKING TEMPERATURE	: -10°C - 50°C
LIGHTING SOURCE LIFE	: >50,000Hrs.

STANDARD

TIS. 1955-2551 LIGHTING AND SIMILAR EQUIPMENT:

RADIO DISTURBANCE LIMITS

ISO 9001 CERTIFIED FOR QUALITY CONTROL GUARANTEE

RoHS

MODEL	LAMP		HOLE CUT(mm)			WEIGH	REMARK
	WATT	TYPE	W	L	H	Kg	
XZ-LD-022FS	300	SMD	320	769	84	18.5	